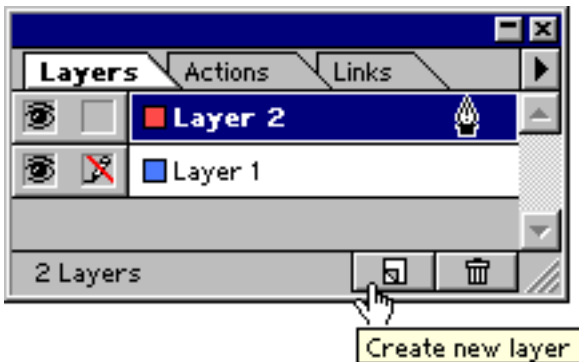
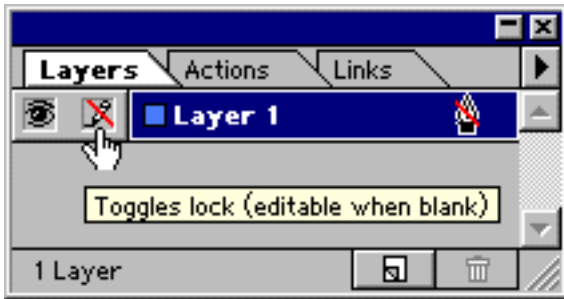


Setting up the tutorial in Adobe® Illustrator® 7-9

1. First open the tutorial file:  
File > Open > tem1.ai.pdf
2. Next, save the file in Illustrator format:  
File > Save As > myfile.ai
3. Next bring up the layers palette:  
Window > Show Layers
4. Lock the layer containing the template,  
then add a new layer. Draw on this new layer.



First click the direct selection tool



Then click the pen tool



*Note: Clicking the Direct Selection Tool just before clicking the Pen Tool is not a requirement - it is a tip. It is to make sure that when the Ctrl key (Windows®) is pressed (or Command key for Macintosh®), that the next selected tool is the Direct Selection Tool instead of a different, unintended selection tool. While actively making or modifying a path using the pen, pressing Ctrl (Windows) or Command (Macintosh) will activate the **last** selection tool used. It is more likely that you will make adjustments to anchor points and control handles while you are drawing than it is that you will move the entire path.*